



Monroe Hall Renovation





North Entry

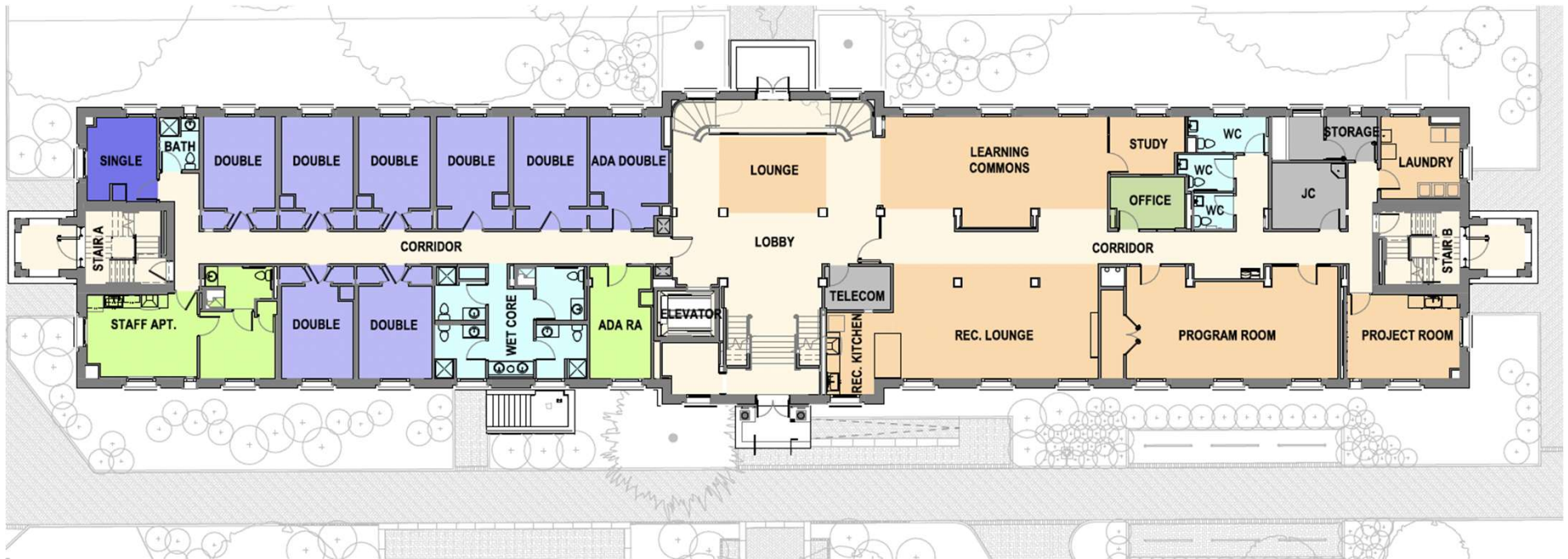


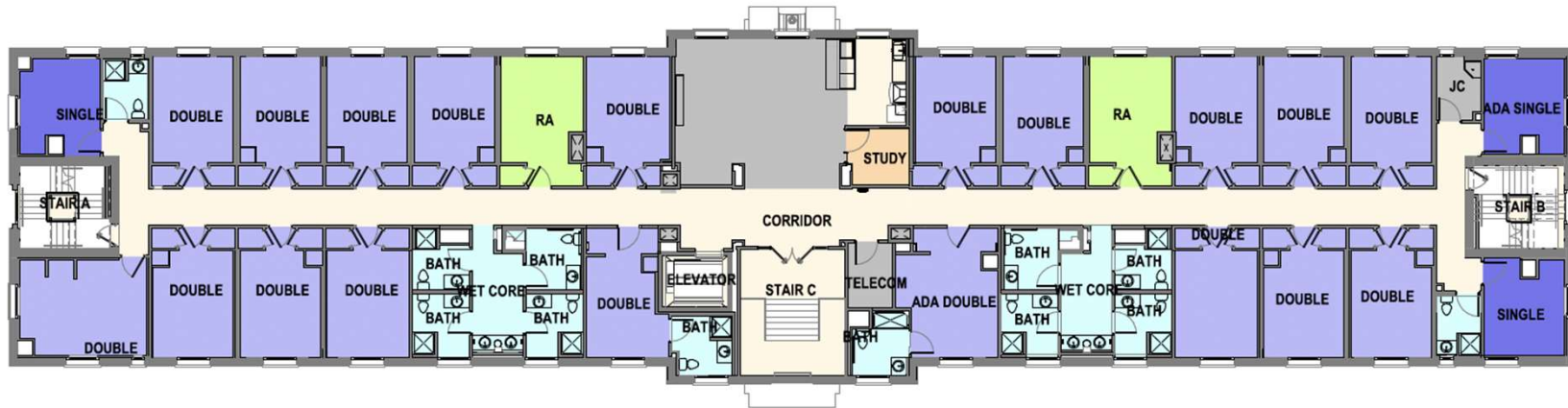


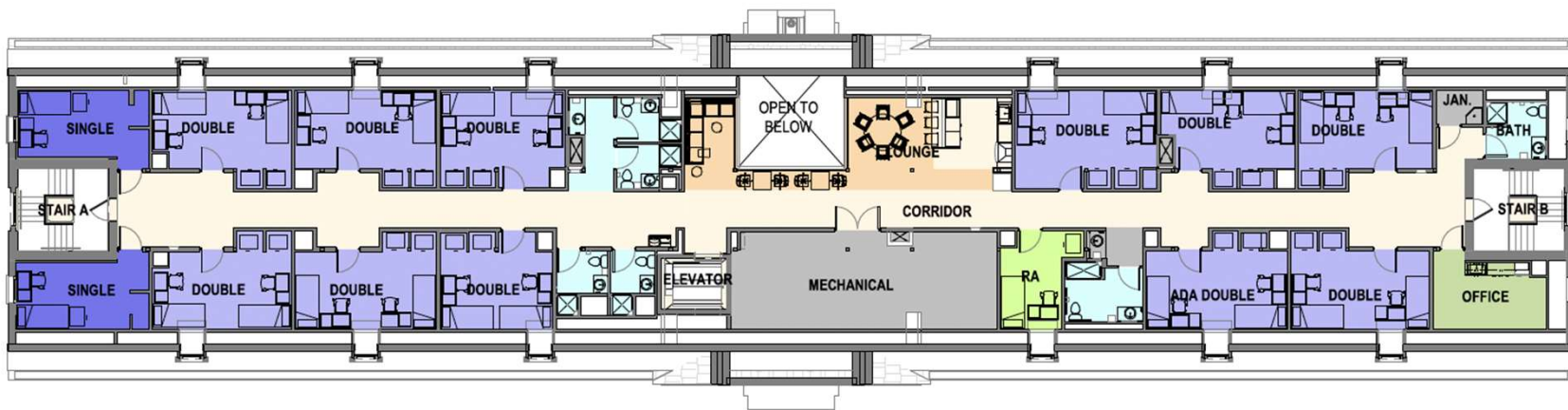
South Lawn

Monroe Hall

SOUTH LAWN AT JAMES BLAIR DRIVE









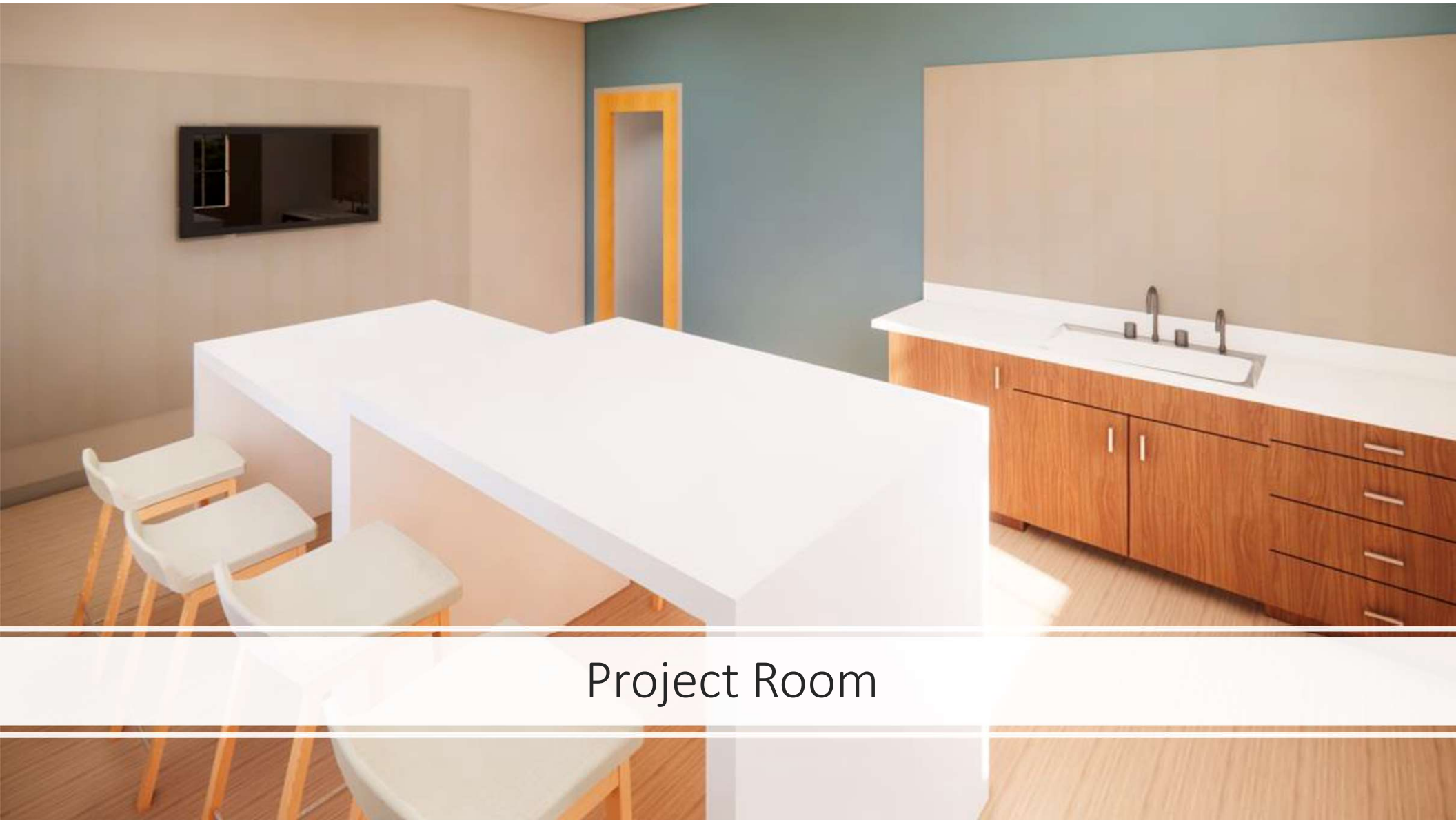
Lobby



Recreation Social Lounge



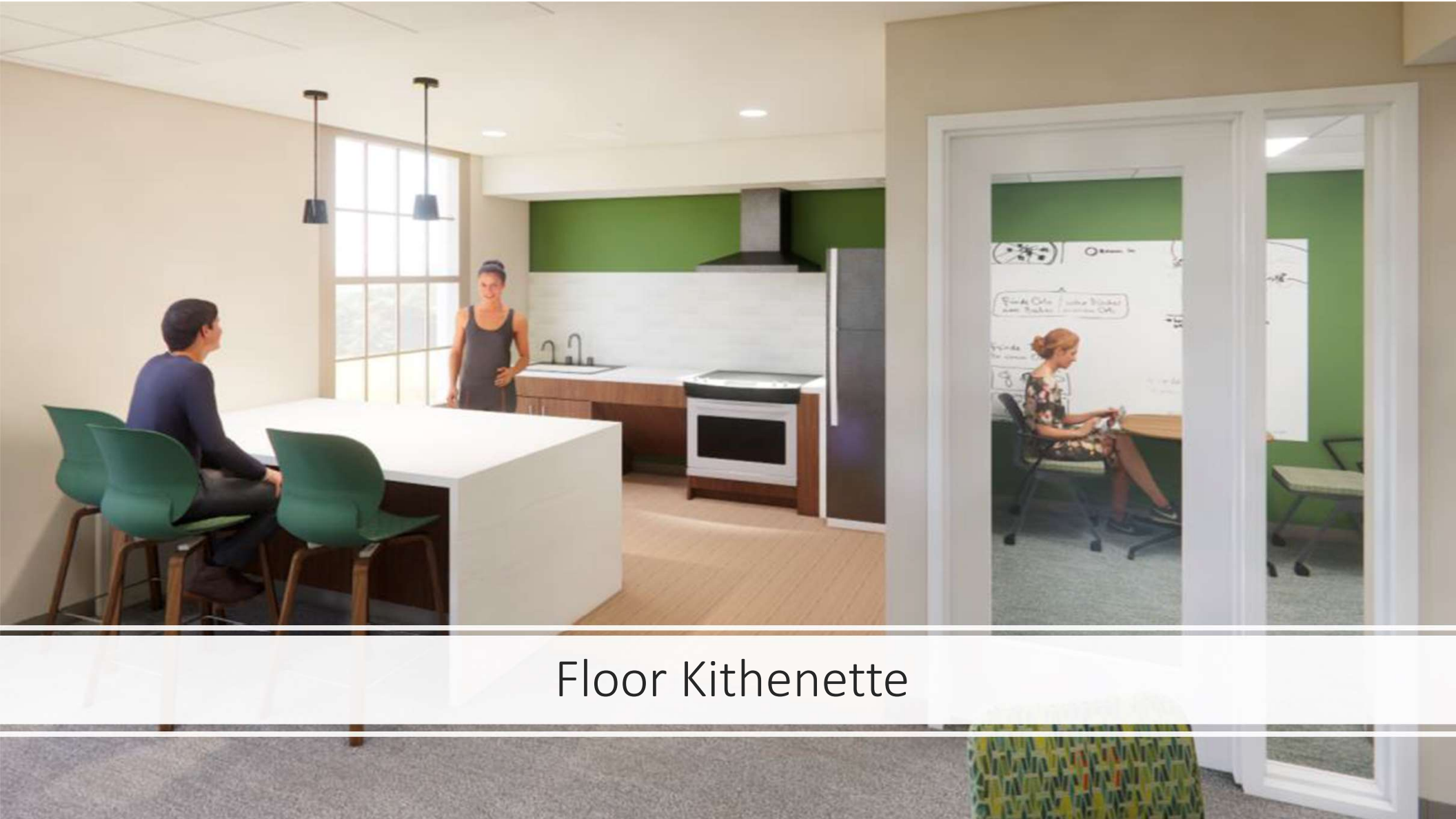
Program Meeting Room



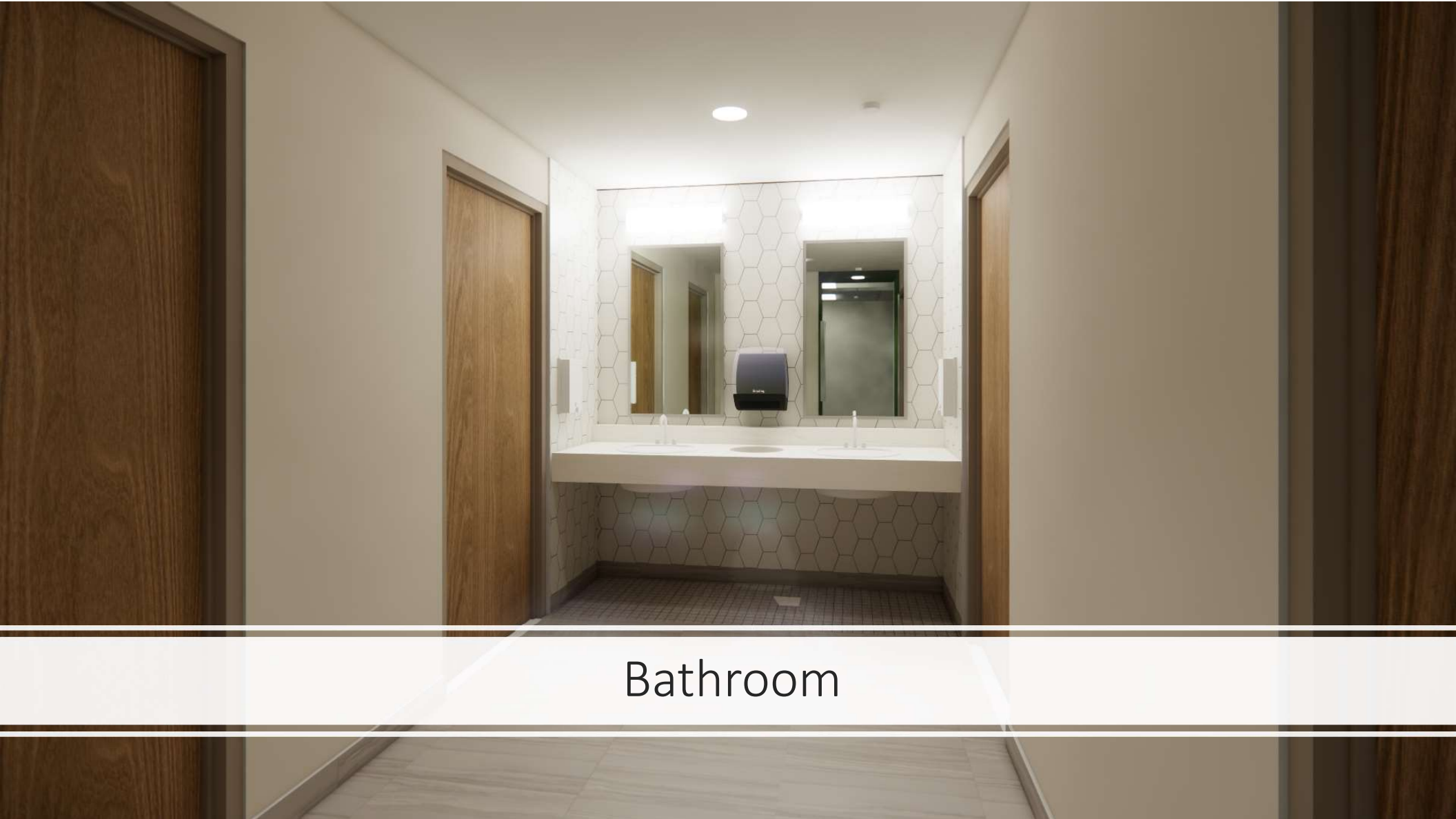
Project Room



Floor Lounge



Floor Kithenette



Bathroom

Bathroom Layout





4th Floor Bedroom

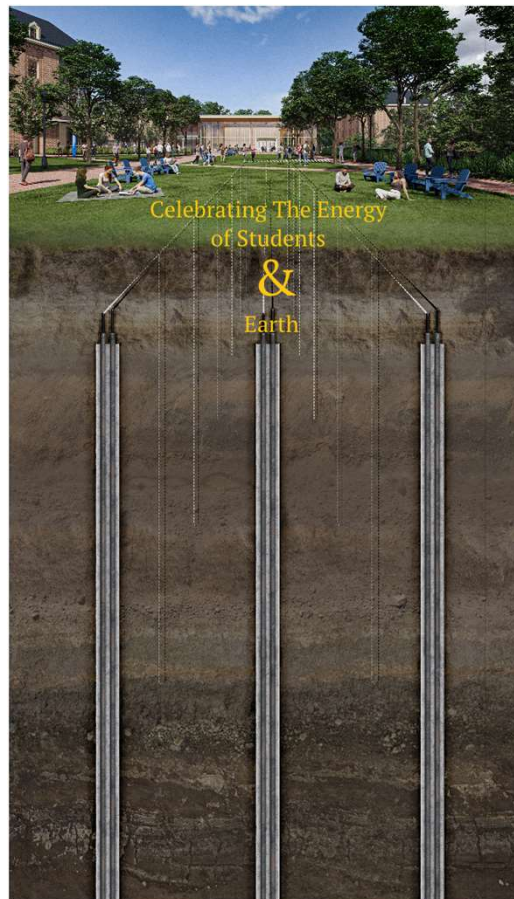


4th Floor Lounge



4th Floor Lounge

Sustainability



r

Monroe Hall

Plant Species & Place

Featuring plants that are found on campus

Level
4



Willow oak
Quercus phellos

Level
3



Maidenhair tree
Ginkgo biloba

Level
2



Live oak
Quercus virginiana

Level
1



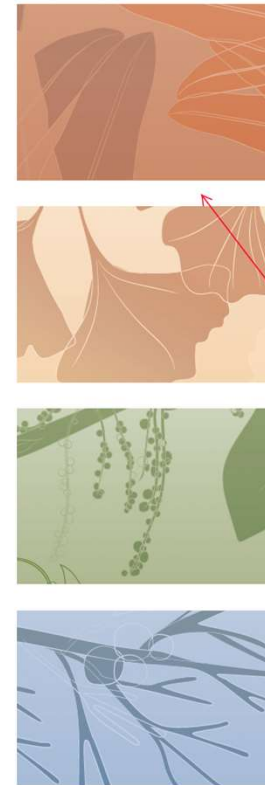
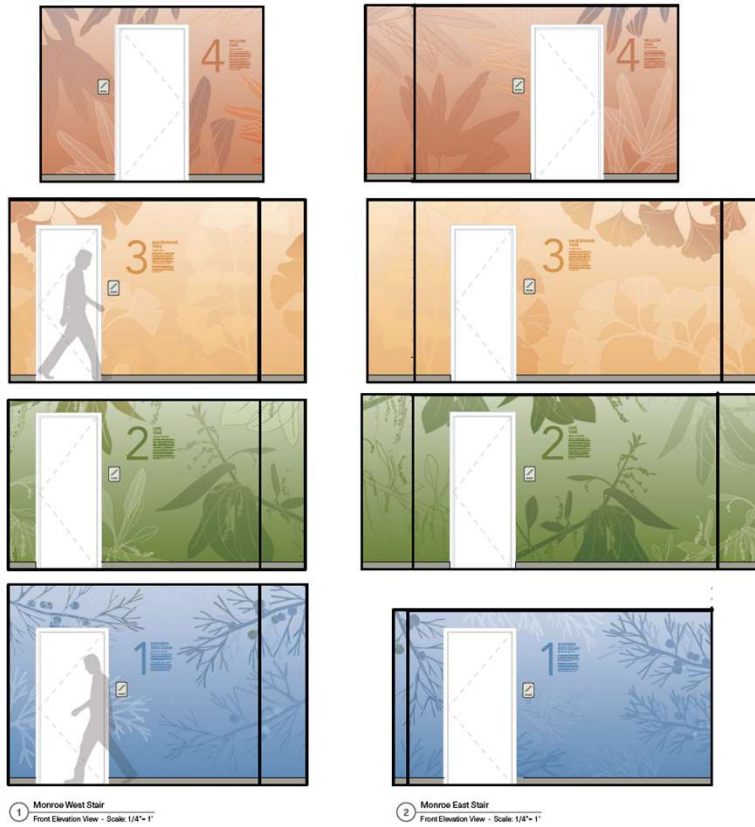
Eastern red cedar
Juniperus virginiana



Campus Flora

Colors and themes

- More than 300 species and varieties of woody plants have been planted throughout the history of the college.
- Each Level would feature one species found on the William & Mary grounds.



Monroe Hall Levels

- Color gradients match the accent colors on each floor.
- Hints of adjoining floor colors are in the illustrations to tie levels together.

CONCERNS THAT LV 4 AND LV 3 COLORS MAY BE TOO SIMILAR. WE NOTED THAT WE WILL REVIEW FINAL SAMPLES



Monroe Hall Render

- Mock-up of typical views approaching the stair from the hallway and of the graphic wall wrap.



4 **WILLOW OAK**
Quercus phellos

The willow oak is a North American species of a deciduous tree in the red oak group of oaks. It is native to the south-central and eastern United States. A willow oak located between Wren Building and the Sunken Garden is among the oldest trees on campus.

Willow oaks are known for their tall, straight trunks and narrow, willow-like leaves, which are lance-shaped and have smooth edges. They are commonly found in floodplains, bottomlands, and along streams, but are also widely planted as shade trees in urban areas. In addition to their ornamental value, the dense and strong wood of the willow oak was historically used to build ships and railroads. Today the wood is used for flooring, furniture, and other woodworking projects.

2 **LIVE OAK**
Quercus virginiana

The Live Oak is intimately tied to William & Mary's history. In 1678, surveyor Robert Beverly used a Live Oak as the corner line for Philip Ludwell's lands; these lands were later donated through the good work of the Reverend James Blair for the use of the Crown to establish a College in Virginia. This tree, called the "Old Monarch" or "Charter Oak" stood at the corner of the university's Wren yard on what students now call "Confusion Corner" until 1943. This tree's year-round greenery shaded students as they entered the Wren yard from Williamsburg from the university's humble beginnings. It saw the construction of the Wren Building, the Braferton and the President's house in its lands. In 1943, just before the tree was taken down, seedlings were taken and planted around campus. Descendant trees have continued the Charter Oak's proud tradition as a unique symbol of William & Mary.

3 **MAIDENHAIR TREE**
Ginkgo bilboa

The Ginkgo bilboa tree, also known as the maidenhair tree, is the only tree with fan-shaped leaves. They are often referred to as "living fossils" because they are the only surviving member of an ancient group of trees that date back more than 270 million years. It is now known only from cultivation. The last natural populations were presumed to be from China. Their leaves and seeds have been used in traditional medicine for various ailments, and the trees are often considered symbols of longevity and resilience.

Ginkgo trees are dioecious, meaning there are separate male and female trees. The male trees, like the "Princeton Sentry" cultivar located in Tyler garden, do not produce fruit or seeds. They are known for their beautiful fall foliage, with leaves turning a bright yellow before falling off.

1 **EASTERN REDCEDAR**
Juniperus virginiana

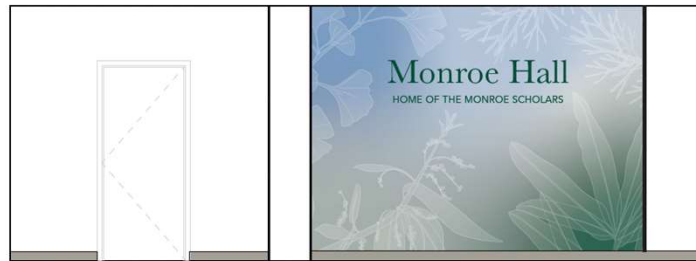
Eastern redcedar is actually a juniper; as its botanical name, *Juniperus virginiana*, indicates. This ancient species dates back to aboriginal America, where fossil evidence indicates it covered large portions of the continent. On campus, eastern redcedar can be found in the Crm Dell meadow.

The fruit of the eastern redcedar are a distinctive feature of the tree. They are small, blue-gray or purple in color, and have a powdery coating. The fruit resembles a berry but is actually a cone made of fused cone scales. The wood has a distinct, spicy aroma that is prized for its pleasant fragrance. It's often used in the production of cedar chests and closet liners to repel moths and other insects.

Monroe Hall
Level Copy Detail

- Descriptions of each featured plant, interesting facts, and where to find the species on campus.
- We will provide a Word document with all copy for review.

W&M TO RECEIVE WORD DOC TO REVIEW & PROVIDE COMMENTS



3 Monroe Lobby West
Front Elevation View - Scale: 1/4" = 1'



Monroe Hall

Lobby

- Combination of all plant illustrations from all levels

CAMPUS FLORA



Among the scenic locations on campus more than 300 species and varieties of woody plants have been planted throughout the history of the college.

4 Willow oak
Quercus phellos

3 Maidenhair tree
Ginkgo biloba

2 Live oak
Quercus virginiana

1 Eastern redcedar
Juniperus virginiana

QR CODE UPDATED TO LINK TO WOODY PLANT SPECIES TOUR

W&M TO REVIEW & CONFIRM QR CODE

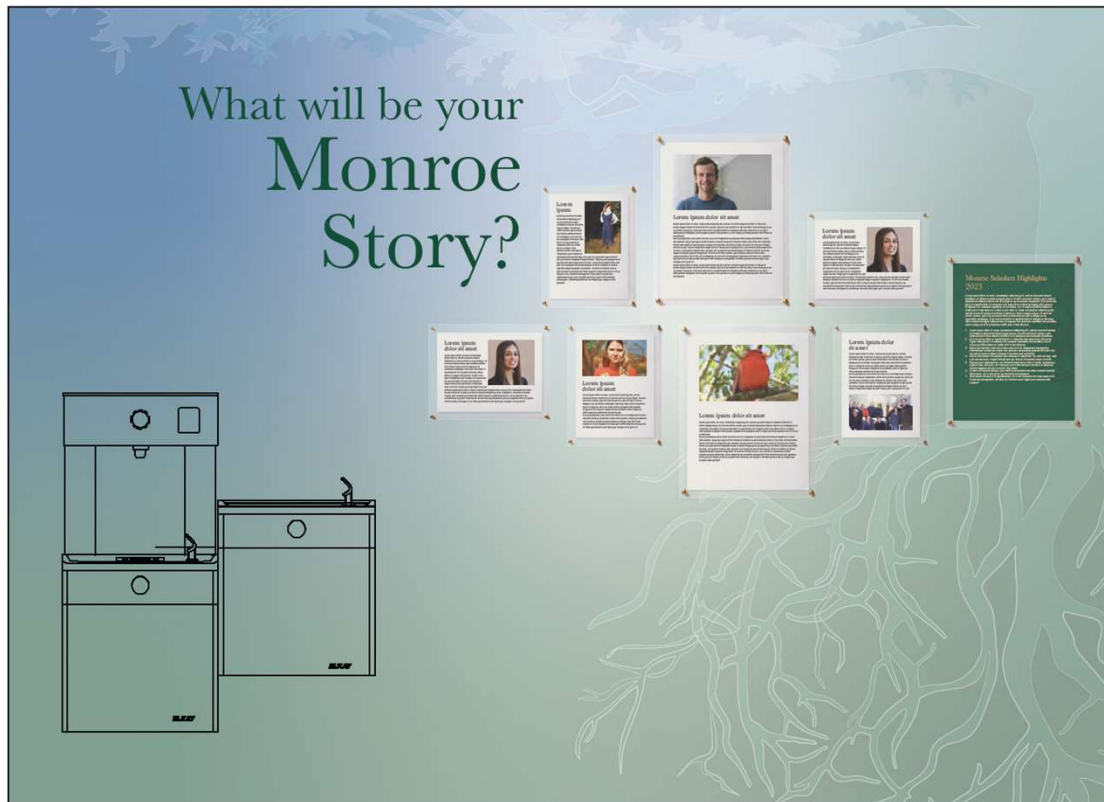
W&M TO REVIEW & CONFIRM COPY



Monroe Hall

QR code panel

- Panel that matches Directory size & style
- QR code goes to the Campus Tour of Woody Species: <https://www.wm.edu/as/biology/planttour/index.php>
- Short informative blurb
- Level numbers with species names & illustration detail

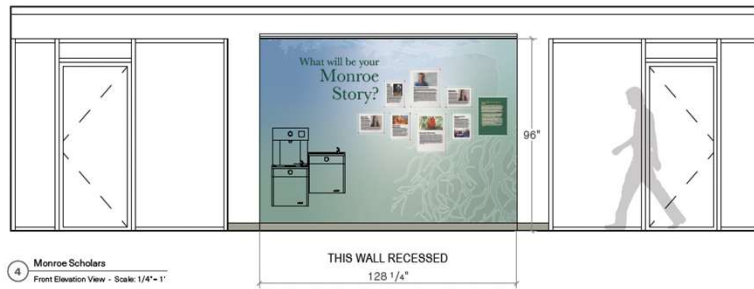


Monroe Scholars Exhibit Detail

FRAMES

- Standard sized clear acrylic float frames, available at Michaels: <https://www.michaels.com/product/8x10-modern-clear-acrylic-picture-frame-with-gold-hardware-for-art-photos-wall-frame-size-12x15-D306782S>
- (5) 11x14 - \$99/ea
- (3) 16x20 frames - \$84/ea





Monroe Scholars Exhibit

- Located in the hallway nook near the Program Room.
- Features Live oak roots to match the flora theme throughout the building.
- Acrylic frames feature Monroe Scholars.